

Setting Up The TMS-Pro System

www.foodtechcorp.com

SETTING UP THE TMS-PRO SYSTEM

Congratulations on purchasing your TMS-Pro Texture Testing system. Now that you have opened the boxes and looked at the manual we would like to get your testing started as quickly and smoothly as possible.

We recommend that you find a solid and level bench area with storage beneath to keep your test probes and accessories.

INSTALLATION:

1. Place the TMS-Pro on a solid laboratory bench that is free from vibrations or movement during analysis. Any movement during testing will be shown as “noise” within your force-displacement curve.

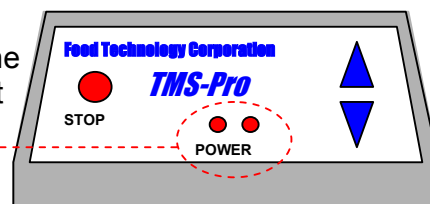
You will need a minimum of two power sockets – One for the PC and one for the instrument.

2. Connect the mains power lead to the TMS-Pro instrument. A power filter may be required if electrical noise from 3-phase power supplies is present.

A power lead with an earth connection must be used. Failure to earth the equipment will result in:

- a) Major safety hazard
 - b) Invalidate results by creating excessive electrical noise
3. There is a safety key lock on the rear of the unit.
 - a) Up position for general operation displayed by two lit LED lights on front of TMS-Pro unit
 - b) Side position for emergency override if the unit becomes overloaded or jammed. Displayed by one LED light on Front of TMS-Pro unit

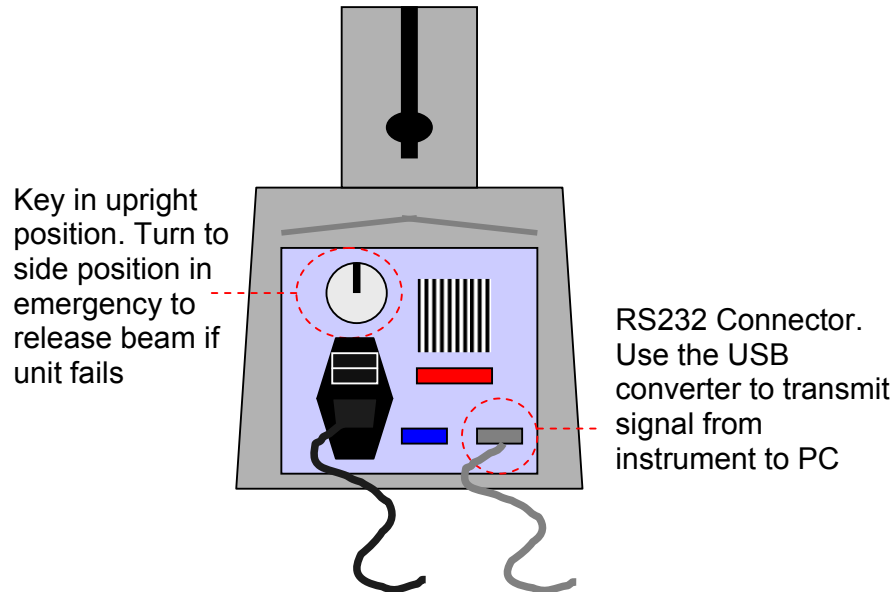
The power key must be in the up position and the two LED lights lit. The unit will be permanently damaged if it is operated with the key in the side position and one LED lit



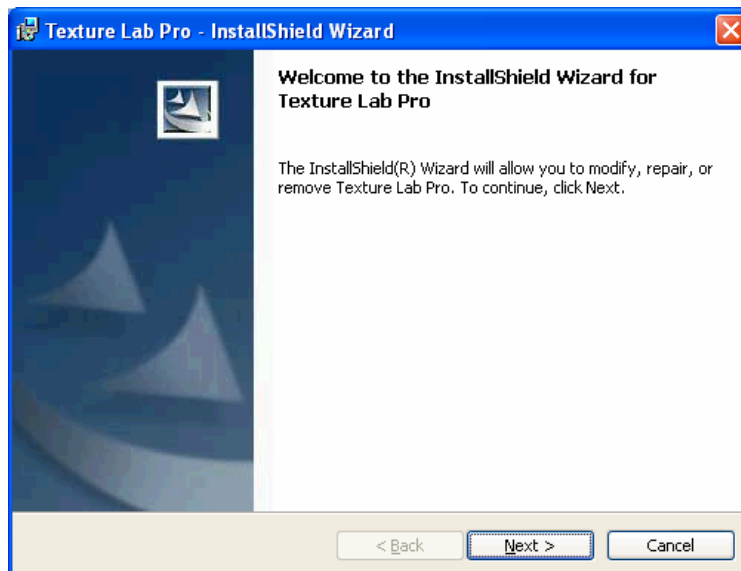
Ensure that the safety key is in the up position. It is advisable to remove the key from the unit and store in a safe place

4. Connect the RS232 and USB converter lead to the unit. Please follow the individual USB driver Connector instructions if required.

Ensure that the key is in the upright position at all times unless in emergency to release the travelling beam.



5. Insert the TextureLab Pro CD into the CD-Rom drive of the PC and follow the on screen installation instructions. The install shield wizard will prompt you to at key stages within the installation.



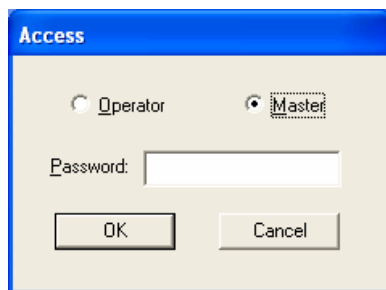
If the program has previously been installed you will be prompted to Modify, Repair or Remove the program. In these cases we recommend that back ups of all archive TextureLab Pro files are made and the program removed.

The FTC logo will be displayed on the PC desktop on successful installation.



6. To access the test system, start the unit by double clicking on the FTC logo on you PC Desktop

Access the system as a Master using passwords if appropriate to gain full testing flexibility



If connection cannot be established ensure that the:

- a) TMS unit is switched on
- b) The two front LED lights are lit
- c) Connection between the load cell and the TMS unit is made
- d) Correct connection between the USB/RS232 converter and TMS unit is made
- e) The USB RS232 converter has been correctly installed
- f) The USB com port is correctly configured as described in the communications error trouble shoot sheet or converter installation handbook.

If the problem persists please contact Food Technology Corporation at www.foodtechcorp.com